



PSE POUR UN
SOURIRE
D'ENFANT

Sept. 2012 - Aug. 2013



ANNUAL ACTIVITY REPORT 2013

Jean-Michel BOUCHARD
President
March 2014

Contents

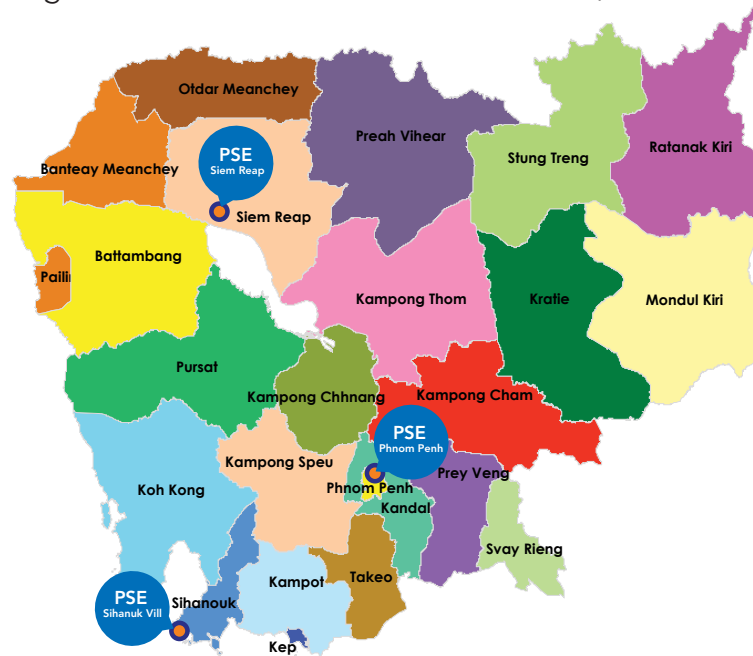
FACTS AND FIGURES FOR THE YEAR.....	2
1. NUMBER OF CHILDREN – NUMBER OF PROGRAMMES	3
2. THE RESULTS	9
3. FOCUS ON THE PSE INSTITUTE: VOCATIONAL TRAINING COURSES	12
4. HIGHLIGHTS AND ACHIEVEMENTS	15
Delivery of the new boarding school	16
Opening of the "Source de Vie" Special School.....	17
Extension of the Hotel and Tourism School	18
Development of the Sales and Management School	19
Development of our "paillotes" programme	21
"Smile Village" rehousing project at Prey Sor	22
Summer camps	23
5. THE TEAMS.....	24
AVERAGE COST OF PROGRAMMES – SPONSORSHIP	27
OUR PROJECTS AND DIRECTIONS	31
1. MEDIUM-TERM VISION	29
2. IMPROVEMENT OF OUR GOVERNANCE IN PHNOM-PENH.....	32
3. OUR PROJECTS.....	34
4. OUR DIRECTIONS.....	41
ACKNOWLEDGEMENTS	42



FACTS AND FIGURES FOR THE YEAR

1. NUMBER OF CHILDREN – NUMBER OF PROGRAMMES

In 2012-2013, Pour un Sourire d'Enfant (PSE) supported 6,500 children and young people in its programs in the districts of Phnom-Penh, Sihanoukville and Siem Reap in Cambodia.



For nearly twenty years, PSE has been developing an integrated approach to raising children from abject poverty and helping them into functional profession: our programs incorporate education, vocational training, healthcare, protection and assistance for families.

The children come from families living in abject poverty, whose only resource comes from jobs such as litter collection, begging, labouring, street selling and masonry 'stone workers', etc. A sum total of 5,800 families are currently in our 'action areas', monitored by our welfare team, made up of 25 social workers, with extensive experience in the field, and often former (PSE) pupils, who were themselves litter collectors in their youth.

GENERAL EDUCATION

- **4,600 children provided with schooling:**
 - o 3,100 in state schools
 - o 1500 in "remedial studies" in our Phnom-Penh Centre or in partner state schools. Remedial studies are for children between 10 and 14 years of age, who are at least 4 school years behind in relation to their age, and girls are given priority
- **1,500 youngsters trained at the PSE Institute in Phnom-Penh,** in Foundation classes or in one of our 8 Vocational Training schools
- **47 children with dissability** enrolled in our Special Needs Education program
- **59 infants** taken care of in our mother and child protection centre
- **Some 300 children enrolled in our childcare centres**

The utmost importance is the success and comprehensive care within our support programs. Providing protective housing, nutrition/healthcare, extracurricular activities and childcare centres, while giving regular homework, while offering our full support.

NUTRITION: 8,500 meals served per day



HEALTHCARE: 20,000 consultations and treatments per month

Giving consultations and treatments per month provided by our healthcare team of doctors, nurses, psychologists, pediatric nurses, etc.

Treatment is extended to the children's families when necessary. First aid, preventive medical visits, vaccination campaigns, health and hygiene education, including dental hygiene, are provided in the Phnom Penh Health Centre in the school's infirmaries at four state schools and by three mobile bus infirmaries. Two of these travel around the schools and the third travels around the villages. There are also specific treatments given to the infants in our Mother and Child Protection Centre and those given to the less-abled children in our Special Needs Education Program.

Our psychologists provide support to children suffering from trauma: Around 3,000 consultations in 2012/13. About one hundred young people with drug problems were also monitored.



PROTECTION /HOUSING: nearly 700 children housed

Around 600 children are currently housed in three of our residential buildings, at the Phnom Penh Centre.. The new boarding school, which opened in May 2013, the residential school and students' residence. Around one hundred others are with foster



This housing prevents the ill-treatment of more than 150 of them, who are in danger in their family. They are mostly girls. They are accommodated in the residential school, along with the youngest children.

The other children are housed to allow them to continue their studies as they live too far away from the PSE Centre to attend on a daily basis, same applies to some orphans.

The students accommodated in the residence have the working conditions they need for their studies which they are unable to have in their own homes.

EXTRACURRICULAR STUDIES

1,570 children, on average per day, have enjoyed the sporting and artistic extracurricular activities on offer in our Centre and since July 2013 from the team in our "sports bus" which travels out to the children in their villages.



COMMUNITY SERVICE CENTRES or "PAILLOTES"



The "pailotes"

The first pailote was created by PSE in the immediate vicinity of the old rubbish tip in Phnom-Penh.

Locations of the pailotes:

- Prek Toil
- Phum Russey
- OBK
- Sihanoukville (PSE centre)
- Sensok

511 children on average per day, have been welcomed to the centres.

The centres created by PSE are within the very Heart of the various supported communities. Currently residing with in the districts of Phnom-Penh and Sihanoukville. PSE is expanding its work.

These centres Provide childcare/nursery, for the young and afterschool homework assistance for Teenagers. State School Education in Cambodia only provides lessons for half of the day. Meals are provided, Breakfast and lunchtime. Also an on-call medical service to carry out First Aid and implement preventive actions in regards to monitoring health.



SUPPORT FOR FAMILIES

1,400 families receive rice compensation to make up for the lost earnings they suffer by letting their children come and study instead of bringing home a few riels by working. This year we have distributed **450 tons of rice**.



This year 79 adults, parents of our children who are in a particularly vulnerable position – 80 % of whom are single mothers – **have received a short vocational training course**, under our FLIP "Family Livelihood Improvement Project" programme mainly funded by our partner, the Italian NGO Intervita Onlus.

69 parents received a loan – for which PSE acts as guarantor- from our partner CMK (Crédit Mutuel Kampuchéa) to set up their own small business.

2. THE RESULTS


384 young people finished their studies at the end of the 2012/13 academic year and graduated from our vocational training schools or from their external Higher Education establishments.



A total of **3,330 young** people have been trained in a profession since we started our action. A large number of them have joined our Alumni Association to help the younger ones in turn.

Their professional integration is very successful. 98 % of young people find a job as soon as they leave, with or without help from our External Relations Office which works with businesses and employers. Their average starting salary is 112 USD per month, - the worker's wage was 85 USD in March 2013 -, and, in the majority of cases, they make rapid progress in their company.





296 adult parents have received a short vocational training course since the FLIP program was launched in 2011, and 190 of them received a microfinance loan of 300 USD on average.

The overall number of children supported has risen by 200 in comparison to the previous year.

A growing number of them has also benefited from the support program due to the larger number of children housed and the development of the extra curricular activities and childcare in the "paillotes", up to 11% this year.

A special effort was made to reduce the drop-out rate which had risen the previous year. We were faced with two challenges: on the one hand, the sudden forced departures of many families from Phnom-Penh, due to the pressure in the housing market, and on the other hand, the attraction for some young people to work in unqualified jobs which nevertheless are an immediate source of income.

The drop-out rate has been reduced from 11% to 8% thanks to even more personalised monitoring and adapting our vocational training curriculum with the creation of several qualification levels at various stages in the studies. This allows the youngsters to stop their training, if they wish, after the initial level of training to work, and then resume their studies to a higher level at a later date.

3. FOCUS ON THE PSE INSTITUTE: VOCATIONAL TRAINING COURSES



In 2012/2013, the PSE Institute welcomed nearly 1,500 young people:

- 455 in foundation classes
- 863 in its 8 vocational schools and in its preparation for IT professions
- 131 students in external higher education (universities and recognised higher vocational establishments)
- 29 students in vocational training outside PSE

The 8 Vocational Training Schools at the PSE Institute in 2012/13

- Hotel & Catering School
- Sales & Management School
- Home-Help School
- Hairdressing, Beauty, Spa School
- Construction Trades School
- Car/Motorbike Vehicle Maintenance
- Gardening/caretaking School
- Audiovisual Professions School

For the start of the academic year in September 2013, the two- and three-year courses following a Foundation year were rearranged into half-yearly cycles with intermediate training certificates being awarded before the final diploma.

The PSE Institute is recognised by the Cambodian Ministry for Work and Vocational Training. With the opening of borders in 2015 planned by the ASEAN countries, competition in the job market is going to increase. To give our youngsters the best possible opportunities, we have started to adapt our courses to the ASEAN vocational training criteria. **Our Hotel & Catering School was the first vocational school in Cambodia to adopt these criteria from September 2013.**



September 2013 The Hotel & Catering School officially adopts the ASEAN vocational training criteria.

This adaptation is accompanied by a reorganisation of our courses in **three schools offering twenty-eight skills areas**, taking effect from the start of the 2013/2014 academic year:

Hotel and Tourism School

- Cooking and Pastry-Making
- Room/Laundry service
- Housekeeping
- Table service
- Massage and Spa
- Nursery Assistant
- Reception
- Hairdressing and Make-up
- Tourist Guide

Sales & Management School

- BBA Bac + 4
 - Sales and Marketing
 - Management and Accountancy
- BTS Bac + 2
 - Retail Trade and Distribution
- Bac Pro
 - Management and Accountancy
 - Sales

Technical School

- Mechanics
- Audiovisual
- Construction Trades
- IT

(2 foundation years before joining a training course run by a partner NGO)



70% of the youngsters study in the first two schools.

4. HIGHLIGHTS AND ACHIEVEMENTS

Thanks to the generous support of our sponsors and donors, several new buildings, vital to the children's well-being and the development of our activities, have been built and put into operation.



Delivery of the new boarding school



The boarding school building in our Centre was delivered at the end of March 2013. Intended to accommodate children and young people affected by their family's enforced geographical isolation, it now houses a total of 400 children who can therefore continue their studies. There are 12 youngsters in each bedroom, grouped together by gender, age and programs (remedial education, vocational training, etc.). This encourages them to make friends and help each other with their homework, for example. It also helps our staff to organize their timetables.

In accordance with the mixed use of the building planned from the outset of the project, 9 classrooms have been installed in the left wing of the building. They are used by our students in the Sales & Management School whose numbers have increased sharply.

According to the protection/housing needs and with the improved organisational strength of our management department for the boarding school, we are now able to reach the building's maximum accommodation capacity, namely 600 children.

A solar generator has been installed on the roof of the building, which enables us to save around 10,000 US dollars per year on our energy bill. It was funded by the AIADD Solidarité Association which also took care of the technical survey, by the Alstom Foundation for the environment and by the DOD Company.

Opening of the "Source de Vie" Special School

This special school is on the ground floor of the boarding school building, and now accommodates 18 children with multiple disabilities, day and night.

The project was born out of the realisation that, in spite of all our efforts, as the children grew, it was becoming increasingly difficult for their families to provide them with the living conditions necessary for their safety, their well-being and their development.

Consisting of two living units, the special school includes 4 children's bedrooms, a rest-living-education room, a bedroom for the night staff, 2 living rooms, a big kitchen and a relaxation and sensory stimulation room (sensory awakening room). The children also benefit from a balneotherapy pool in the special school garden.

Our Medical Department is responsible for the special school and the staff is composed of special needs teachers and assistants. The children receive a daily physiotherapy session. 8 out of the 18 children are integrated into the PSE educational programmes, in classes in the centre or in state schools.



The children and their teachers at the special school



Session in the balneotherapy pool

The goals of the "Source de Vie" special school

- To make these children's lives safer, and guarantee their right to life and to a dignified life.
- To give children the care and treatment they need.
- For some, to move towards self-sufficiency and for others, to simply live in a secure environment where attention and tenderness are central to their lives.
- To help the children find meaning in their life, to teach them how to accept kindness, to love themselves and through this, to live their lives as children to the full.
- To create a place where friendships can be developed and where, of course, each child's family is supported in turn.
- To show the families and the population that it is possible to live together and share daily life, in spite of differences.
- To facilitate interaction with the other young PSE people with the integration of the young disabled people in the boarders' building.

The collaboration with Action Cambodge Handicap (ACH), an association which PSE helped to establish in 2012 and whose mission is to take care of disabled adults, continues with the signing of a partnership agreement at the start of 2013.

Extension of the Hotel and Tourism School

While there are guaranteed opportunities in a job market where there is great demand – tourism in Cambodia is continuing its rapid growth with 4.1 million visitors in 2013 -, our School trains some 350 students on courses specifically for the hotel and catering sector. **The facilities needed to be expanded to give all the youngsters adequate access to practical sessions.**

Four bedrooms have been added to the Centre's training hotel, the bakery/pastry-making workshop has been enlarged, and the resource centre has been refurbished along with the classrooms and the School offices.



The enlarged bakery/pastry-making workshop



The refurbished resource centre

A new computer laboratory with 30 work stations equipped with sector-specific software has been opened for students on the Reception course.



The School's classrooms have been refurbished.



New IT laboratory for students on the "Reception" course

The kitchen at the Centre's "Lotus Blanc" training restaurant is currently being extended.

Development of the Sales and Management School

Thanks to the success of our educational programme, especially in remedial education, an increasing number of our young people reach a reasonable level of education, and a certain number of them obtain the training certificate or the Baccalaureat (equivalent to GCSE or A-Level). Cambodia is sorely lacking in young people trained in management and sales even though its economy is growing. The opportunities are there and we have launched a three-year extension plan for the School which will enable it at the start of the 2015/2016 academic year to enrol over 550 students in the post-Bac foundation year and in three training courses:

- The BBA course (Bachelor in Business Administration): Bac +4
- The Bac Pro course (Training certificate + 1 foundation year + 2 years)
- The BTS Distribution course (Bac +2)

This last course, organised entirely as a block-release training course thanks to the close relationships we have with employers, started at the beginning of the 2013 academic year. It prepares students for jobs in distribution and the retail trade and places great emphasis on practical work.

The development plan includes the building of new infrastructure for the students on ground which belongs to the association in the immediate vicinity of the Phnom-Penh Centre. The construction of a two-storey school building started in July.



Foundation work of the Sales and Management School building – August 2013

The plan also includes the development of practical application activities via work placements and exercises in the framework of training companies. Several activities already exist: market research, the administration of a fictitious company, etc. The PSE Centre souvenir shop, which was upgraded in late 2013 with the support of the ACCOR Foundation, serves as a training retail company for the students.

Finally, we place emphasis on the continuing training and coaching of the School's teachers and contributors. By the 2015/2016 academic year, the School will have 32 full-time teachers and 11 part-time teachers and contributors, all Khmers.

A special three-year training program has been set up. It includes lessons/lectures given by professional experts in Cambodia and abroad (Vietnam, Thailand, Singapore, Malaysia), coaching in pedagogy and training courses in English.

At the same time, the School's teaching partners, the ESSEC Group (BBA course) and the AFPA (Bac Pro course) continue to lend their support.



Development of our "paillotes" programme

PSE's action originally began with the opening of the first paillote in the immediate vicinity of the old rubbish tip. As close as possible to families, within the very heart of the communities being helped, the paillotes are special places offering childcare, where practical support comes in many forms: meals, health centres, childminding, help with homework, extracurricular activities and meetings between the families and our welfare team. They enable the members of each community to get to know the association and its everyday work, and to build trusting relationships... and we can get our education message across that much better.

Our reach has expanded with the movement of several families to areas further away from Phnom-Penh where we have come into contact with communities which are equally as impoverished. By creating paillotes within these communities, we provide them with basic assistance and develop an "informal presence" in them, which then enables us to encourage children's education.

In August 2013, we opened a new paillote in the village of Sensok where 1,000 families and around 1,500 children live, in the remote suburbs of Phnom-Penh. There are plans to open three new paillotes in 2014, one of which will be near the new rubbish tip.

In July 2013, we launched a new activity, the "sports" bus with a team consisting of a social worker, two leaders and a doctor and which travels around the various paillotes in the Phnom-Penh region. By offering children sporting and fun activities, we strengthen the ties we have formed with the children and their families.

"Smile Village" rehousing project at Prey Sor

Launched last year, the aim of this project is to rehouse 90 of our families – 500 people; 350 children in programmes– on the association's land a dozen or so kilometres from the PSE Centre in the outer suburbs of Phnom-Penh. These families are suffering acute hardship and must leave their current dilapidated housing due to the city's expansion and the inexorable rise in real-estate prices. They come from several communities, including that of Prek Toil in Stung Mean Chey, on the edge of the old rubbish tip.

The project has been designed and conducted in partnership with two other NGOs, Habitat for Humanity, which finances and builds the accommodation, and STEP which will assist the community by setting up shared services and creating on-site work activities.



PSE selects families living in rented accommodation and guarantees the project's social purpose. We are in charge of making the land available and setting up the services, as well as the project's operational launch. So far, the preliminary stages for the creation of Smile Village have been completed, such as the site development, the involvement of the families in the preparation of the project (organisation of meetings, on-site visits, appointment of leaders and so on).



The construction of the accommodation will be carried out in phases of 15 houses. The first phase is planned for the first half of 2014.



Summer camps

As with every year, our summer camps welcomed several thousand children on a rotating basis for one week during August. Organised by Marisa Alonso, the chairwoman of PSN (PSE in Spain) and her team of volunteers, the camps allowed the children to continue to benefit from PSE's care (food, healthcare) and not be forced by their families to go back to work in the street as sellers or rag-pickers.

It is a joyful time of sharing and friendship, organised by Khmer supervisors and those Europeans who come voluntarily to help the children. In 2013, 369 Khmer and European youngsters looked after 2,700 children every day in the PSE centres in Phnom-Penh, Siem Reap and Sihanoukville and in several community villages supported by PSE.

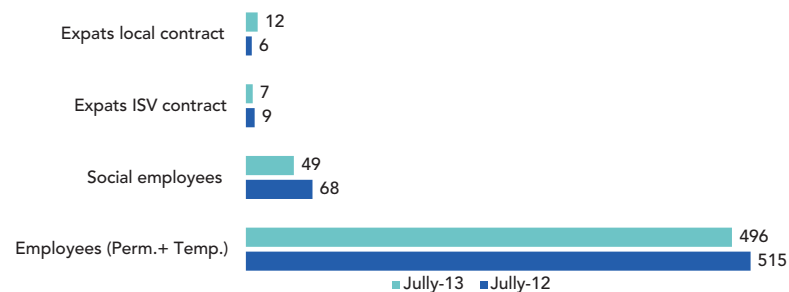


5. THE TEAMS



In Cambodia, staff numbers have remained practically unchanged with almost 500 Khmer employees, including the management team, plus fifty or so social jobs, temporary 6-month jobs offered to the parents of our children who are in a highly vulnerable position. The FLIP programme (*) set up in 2011 limited this number of social jobs.

Staff in Cambodia end July 2013



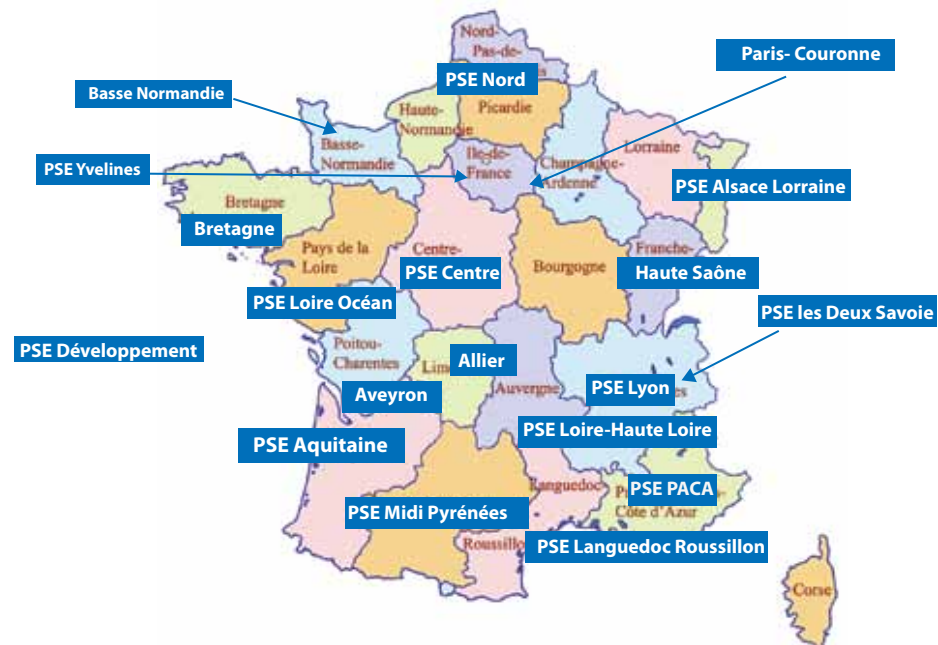
In France, PSE employs 3 employees in charge of running the volunteer network, managing donations and sponsorships, and coordinating patronage and communication.

(*): FLIP for "Family Livelihood Improvement Project": a short vocational training programme for parents of our children suffering acute hardship

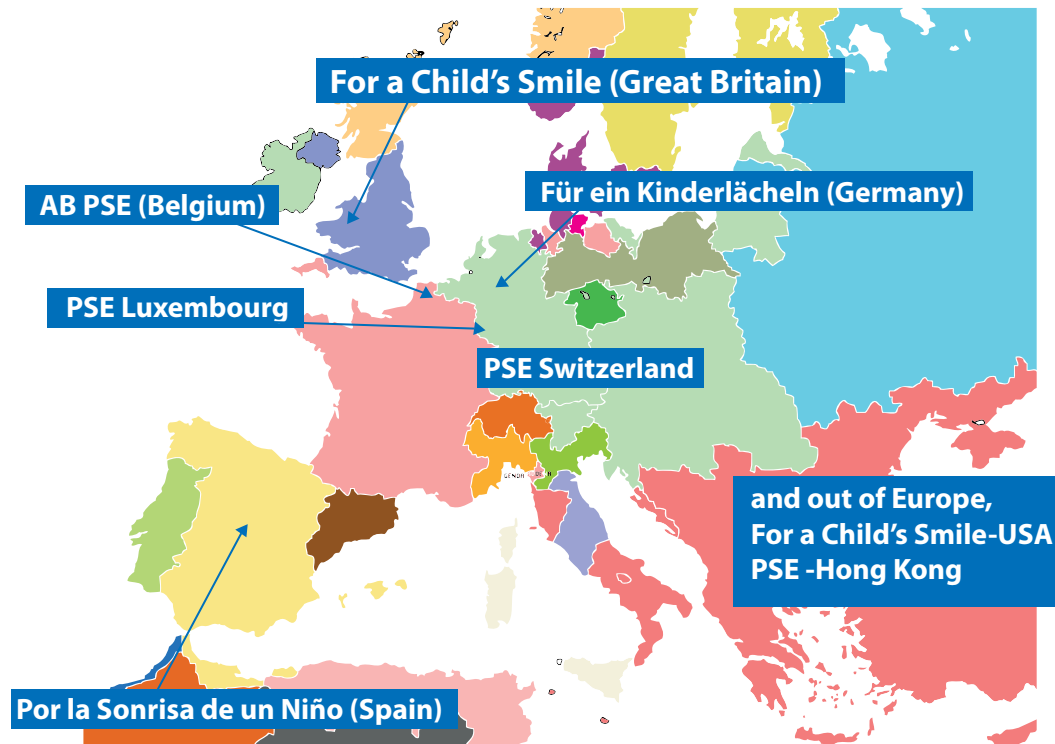
This organisation is only possible through the huge involvement of volunteers in France, Spain, the UK, Belgium, Germany, Luxembourg, Switzerland, the US and Hong-Kong. Organised in regional branches in France and national ones in the other countries, almost 300 are involved on a daily basis, occasionally supported by several hundred other supporters of the association.

They spread awareness of PSE to attract donations and further sponsorship.

Networks of PSE in France



Networks out of France's border



In Phnom-Penh, the creation of a volunteer branch is planned for 2014.



AVERAGE COST OF PROGRAMMES – SPONSORSHIP

Given the total number of children and their distribution in our various programs in 2012-2013, the average monthly cost for supporting a child was 71.50 US dollars, or €55 with the €/USD exchange rate standing at 1.30.

For the main programmes, the average cost was:

- €35 per month for a child in school, for food, healthcare, extracurricular activities and rice compensation for his/her family
- €89 per month for a young person in Vocational Training, for food, healthcare, extra curricular activities and rice compensation for his/her family
- €31 per month extra for a child/young person on a supplementary programme such as "Protection/ Housing"

Sponsors covered 90% of the costs of our programmes through their sponsorship. Their monthly contribution was €41.70.

Special donations, "programme funding donations", helped to cover these costs, too.



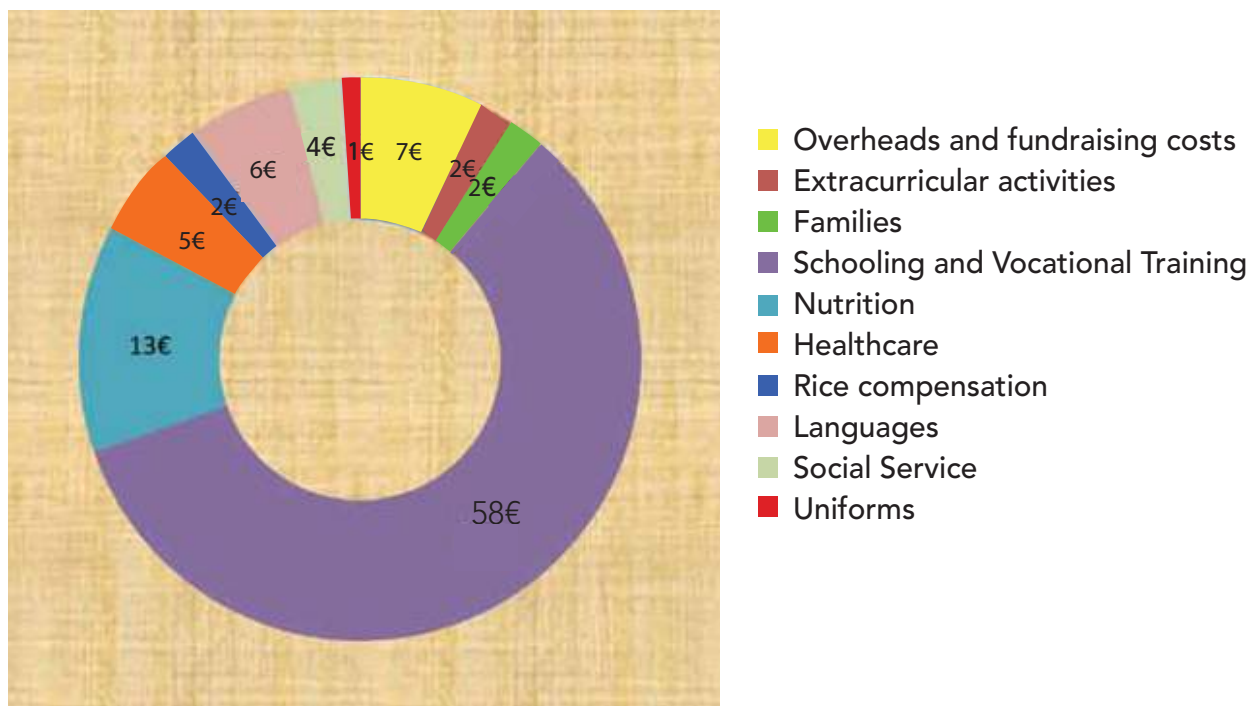


Direct funding from Cambodia rose to 400,000 USD. These donations have been received on-site, via income from training activities such as the two Lotus Blanc restaurants, and takings from local events such as the "Charity Party" organised in Phnom-Penh. New actions have been successfully set up: the writing of a book of Khmer dessert recipes sold with profits going to the association, and the launch of a "Be a Hero" donation drive publicised on the Internet and entirely sponsored by local partners.

Standard sponsorship is €47 per month per child.

Sponsorship is name-free. Each sponsor is free to decide the amount and frequency of his contribution, the main thing being that it is regular. Sponsors let PSE decide on the most suitable allocation of the money based on the distribution of children in the different programmes.

**Breakdown of the cost per child
2012-2013
Across all programmes, children and families
For €100, € ... are spent on:**





OUR PROJECTS AND DIRECTIONS



1. MEDIUM-TERM VISION

The purpose of the PSE Board Meeting in June 2013 with the founders was to reflect on PSE's medium-term vision. The guidelines already drawn up were confirmed, namely a **controlled growth of our action in Cambodia** featuring two key activities:

- The strengthening of our Vocational Training programme by maintaining the same requirement of high quality and professionalism of the teaching and training provided, a guarantee for the successful integration of our young people in Cambodian society
- The development of our action for children in large provincial cities, based on the model in operation in Phnom-Penh. This development is beginning in the region of KompongSom (Sihanoukville).

At the same time, the Board reaffirmed PSE's educational mission in the broad sense, which includes the learning of the moral values of respect for human beings (fight against violence and abuse, equality between men and women), honesty and solidarity. We feel that this teaching is absolutely crucial for encouraging the development and social integration of the children, who, coming from highly vulnerable families often torn apart and affected by alcohol, gambling or debt, are greatly in need of support to develop into free and responsible adults.

With the increase in the number of children cared for by the association, the general moral teaching sessions on Friday afternoons are no longer appropriate. The definition and implementation of a new more in-depth, diverse and flexible program called "School of Life" are included in the projects, from 2014.

2. IMPROVEMENT OF OUR GOVERNANCE IN PHNOM-PENH

To support the growth in activities, the Board wished to provide the Cambodian managers with practical assistance by assigning a management consultant to work with them on a voluntary basis in this area: examining decision-making processes, implementing procedures and new organisational structures, and so on. This mission began in 2013.



3. OUR PROJECTS

They are all designed to guarantee that the PSE mission is achieved as far as possible for children in the deepest poverty, in the spirit of our Charter.

- **Support for state schools**

In December 2011, a study which we conducted highlighted the need of a large number of state schools in which we educate the children for an improved learning environment and better sanitary conditions. Our project consists of renovating and building toilets and sinks, creating access points for drinking water, making sport more accessible through creating sports fields and purchasing equipment, and developing reading through donating books, refurbishing libraries and supporting librarians.



The project involves 44 schools in Phnom-Penh, Siem Reap and Sihanoukville and will benefit 57,000 children. It is implemented in consultation with the supervisory authorities and with the active participation of the school principals, and will be completed during the 2013/14 financial year.

- **Development of Vocational Training**

Our student capacity must be increased whilst still maintaining a high quality of training and adapting to the needs of both the young people and the market. In 2013/14, we are training 1,650 youngsters at the PSE Institute.

The first part of the project involves the incorporation of the training criteria common to the ASEAN in all our schools. This will be a major asset for our young people in the labour market, as there will be stiffer competition. Following the incorporation of these standards at the Hotel and Tourism School, we shall be conducting the same work for the Sales and Management School.

We are working on widening our range of vocational training courses by incorporating short and very targeted training courses which enable us to give all the youngsters on our programs a future, whatever their career path and skills.

We remain focused on the training of all our Khmer teachers and trainers, with support from our pedagogical partners in Europe, and the regular organisation of assignments with “consultants” in their field. They have come to share their expertise and lend their support. This applies to all the courses.

The emphasis on training in English, started in 2011, is continuing and benefits both the students and the teachers. The tools implemented such as the newsletters, and the participation in discussion and lecture events are providing encouraging results.



The number of students in the Sales and Management School has grown by 20% every year since 2011. At the start of the 2015/2016 academic year, there will be over 550 of them, together with those doing the post-Bac Foundation course. They will be taught on the new campus planned on the land known as "Obeka" a few hundred metres from the existing centre.

As well as the construction of the new school building which began this year, the investments required include the construction of a water tower, and a water supply for use in fire protection, the construction of a covered playground – a canteen and homework area-, and the construction of a lecture theatre to hold 300 people for hosting conferences and lectures. The lecture theatre will also be the gathering place for important events which feature in the life of the Centre: graduation ceremonies, meetings at the beginning of the academic year, family meetings, assemblies for the Alumni Association, and so on. In order to make the best use of the building, external organisations will also be able to hire it.



- **Supporting families to better assist the children**
 - Rehousing

The work we do for children and young people cannot be effective unless we help their families when they are in the most vulnerable situations. Today, the issue of housing is crucial for many of them, who live in the slums of Phnom-Penh and are gradually being hounded out because of increasing urbanisation and the rise in real-estate prices. Unable to cope with the increase in rent for their dilapidated shacks, they do not know where to go. Some of them leave overnight to go back to the provinces without work, and the children's education is interrupted.

The "Smile Village" housing project at Prey Sor, which has already begun and is due to take three years, enables us to come to the aid of these families in distress.



○ New pailotes

Our development programme for the pailotes – community services centres – continues in the regions of Phnom-Penh and Sihanoukville.

At Sihanoukville where we are stepping up our action, the opening of two pailotes has been planned benefiting a total of nearly 160 children. The first one opened in November 2013 and benefiting the children in a community which lives in abject poverty alongside the railway track.



These pailotes are the first stage in the development of our action in this region where we are planning to increase the number of children attending school with our support, then in two years' time, to offer vocational training to the eldest, in order to lead the children there out of misery and into a real profession, just like we do in Phnom-Penh.

Three new pailotes will also be created in the region of Phnom-Penh at Oudong, Toul Sambo and Cheug Ek near the new rubbish tip.

- Programme "School of Life"

The new "School of Life" programme, whose importance was highlighted at the Board meeting in June 2013, will be developed from 2014. Validated by the Management, it will include specific training for our teachers, contributions from new stakeholders, the development of activities (theatre performances, screenings of short films, organisation of debates, and so on) with inspections and assessments of outcomes.



- Other projects

In a completely different vein, we plan to upgrade our computer system in Phnom-Penh, something which has become a necessity as the activities have significantly expanded over the last several years.

Finally, the reorganisation of the reception given to visitors to our Phnom-Penh Centre - visitors who are increasing in number every year – is on the agenda in order to give them the best possible welcome and enable every one of them to understand our work and receive and share in the smiles of our children, without disrupting the Centre's operations in any way whatsoever.



4. OUR DIRECTIONS

The future at PSE also involves ongoing discussions about the development of **social enterprises** which would contribute to our mission of the integration of the young people into Cambodian society by offering them a skilled job, and which, at the same time, would be a source of funding for the association, thereby contributing to the sustainability of our work in a virtuous circle.

A focus group has been formed to discuss this subject, bringing together the Management at Phnom-Penh and members of the Board.





ACKNOWLEDGEMENTS

To the 8000 sponsors who through their sponsorship allow us to make a long-term commitment to the children,
To our donators who place their trust in us,
To all the volunteers in our branches, without whom nothing would be possible,
To all our partners, foundations and businesses whose active solidarity enables us to move forward for the good of the children.

THANK YOU!





www.site-pse.org